

**PROJECT INFORMATION**  
**PROJECT TITLE**  
**New Assist Living & Men Support Facility**  
**PROJECT ADDRESS**  
 42154 ST. ANDREWS CHURCH  
 LEONARDTOWN, MARYLAND  
**PROJECT OWNER**  
**St. Mary's Nursing & Rehabilitation Center**



**PROBODRUM ARCHITECTS**  
 ARCHITECTS  
**NOELKER AND HULL ASSOCIATES, INC.**  
 ARCHITECTS

50 WEST GARD STREET  
 CHARLESTON, PA 15022  
 P: 717.240.8444 | F: 717.240.8444  
 NOELKERANDHULL.COM  
 PA 15021 USA

**ADLER ENGINEERS, INC.**  
 130 SOUTH EAST STREET, SUITE 300  
 FREDERICK, MARYLAND | 21701  
 P: 301.462.4444 | F: 301.462.4444  
 WWW.ADLERENR.COM

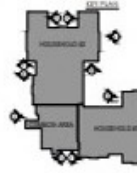
**GATNER & DEHL, INC.**  
 301 WINDING CREEK COLLEGE  
 WASHINGTON, DC 20057  
 P: 717.467.9700

**ADLER ENGINEERS, INC.**  
 130 SOUTH EAST STREET, SUITE 300  
 FREDERICK, MARYLAND | 21701  
 P: 301.462.4444 | F: 301.462.4444  
 WWW.ADLERENR.COM

**HERBERT, ROWLAND & GIBSON**  
 1004 PROFESSIONAL CENTER  
 130 NORTH GEORGE STREET  
 ROBE, PA 17060  
 P: 717.492.3200



"Professional Certification:  
 I certify that this document was  
 prepared by me or under my direct  
 supervision and that I am a  
 duly licensed professional under the laws  
 of the State of Pennsylvania." (28 Pa.C.S. § 1903)



**REVISIONS**

| NO. | DESCRIPTION |
|-----|-------------|
|     |             |
|     |             |
|     |             |
|     |             |
|     |             |

**100% GMP SET**

DATE ISSUED: 04/24/24  
 SHEET NO.: 34  
 SCALE:  
 SHEET TITLE:

EXTERIOR ELEVATION

**A402**